



ULTRA YIELD™
FLASK PATENTED

U.S. Patent 7,381,559. U.K. Patent 2414994

VS

GLASS
FLASK



HIGH AERATION



VS





VS

GLASS
FLASK

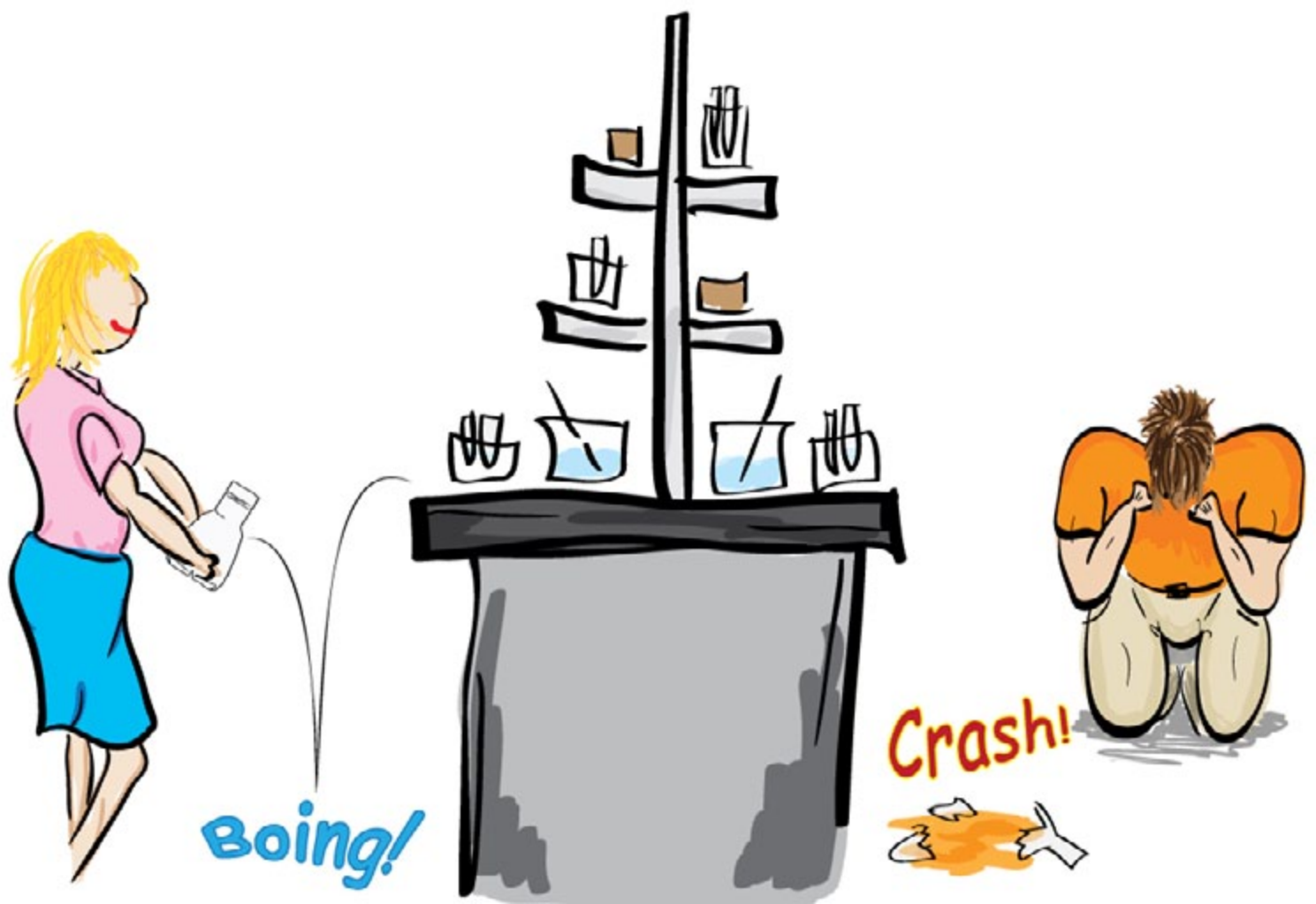


STERILE / EASE OF USE

SAFETY



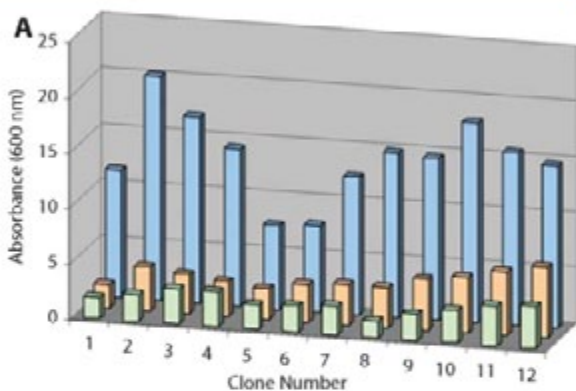
VS





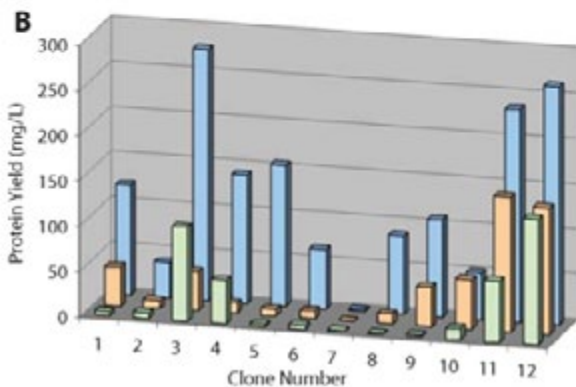
ULTRA YIELD™
FLASK PATENTED

610%
Increase In Yield!



610% Yield Increase*

Effect of flask design on E. coli culture growth and production of recombinant protein. (A) The effect of flask type and growth medium on the observed optical densities of the cultures at A600 following overnight protein expression. Cultures carried out in Fernbach flasks using either LB medium or TB medium are shown, respectively, at the front (green) and in the center (orange). Cultures grown in Ultra Yield™ flasks in TB medium are shown at the back (blue). See Table 1 for a list of the recombinant proteins over expressed by the various clones. (B) The yields of expressed soluble protein (determined by protein assay and recorded as mg protein per liter of expression culture) from the IMAC columns following purification of the twelve polyHis-tagged recombinant proteins, each expressed under the three conditions described in Panel A. Clone locations in Panel B are the same as those in Panel A



*Economical parallel protein expression screening and scale-up in Escherichia coli. Journal of Structural and Functional Genomics 2006 Jun;7(2):101-8. Epub 2006 Dec 23.

Thomson Instrument Company is not affiliated with Corning® or Corning Life Sciences®





ULTRA YIELD™ FLASK

PATENTED

U.S. Patent 7,381,559. U.K. Patent 2414994

Part Numbers & Recommended Speeds:

Recommended culture volumes and orbital shaker speeds (a throw of 1" is generally used for orbital shaking):

Part #	Description	Media (mL)/Flask	Shaker Speed
931147	125mL Ultra Yield Flasks 50/case -- Sterile Please cover the flask with AirOtop Enhanced seals 899421.	40-50mL/flask	300-350 RPM
931144	250mL Ultra Yield Flasks 50/case -- Sterile Please cover the flask with AirOtop Enhanced seals 899423.	75-110mL/flask	300-350 RPM
931141	500mL Ultra Yield Flasks 50/case -- Sterile Please cover the flask with AirOtop Enhanced seals 899424.	125-200mL/flask	300-350 RPM
931136-B	6/case 2.5L Ultra Yield Flasks -- Sterile Please cover the flask with AirOtop Enhanced seals 899425.	500mL (optimum)	300-400 RPM
931136-B	6/case 2.5L (Fermentor Mode)-- Sterile Please cover the flask with AirOtop Enhanced seals 899425.	1L	250 RPM

Ordering Information:

Thomson Instrument Company

Toll Free

800 547.4792

Local

760 757.8080

Fax

760 757.9367

Email

folks@htslabs.com

Online

www.htslabs.com

Address

1121 South Cleveland Street
Oceanside, CA 92054